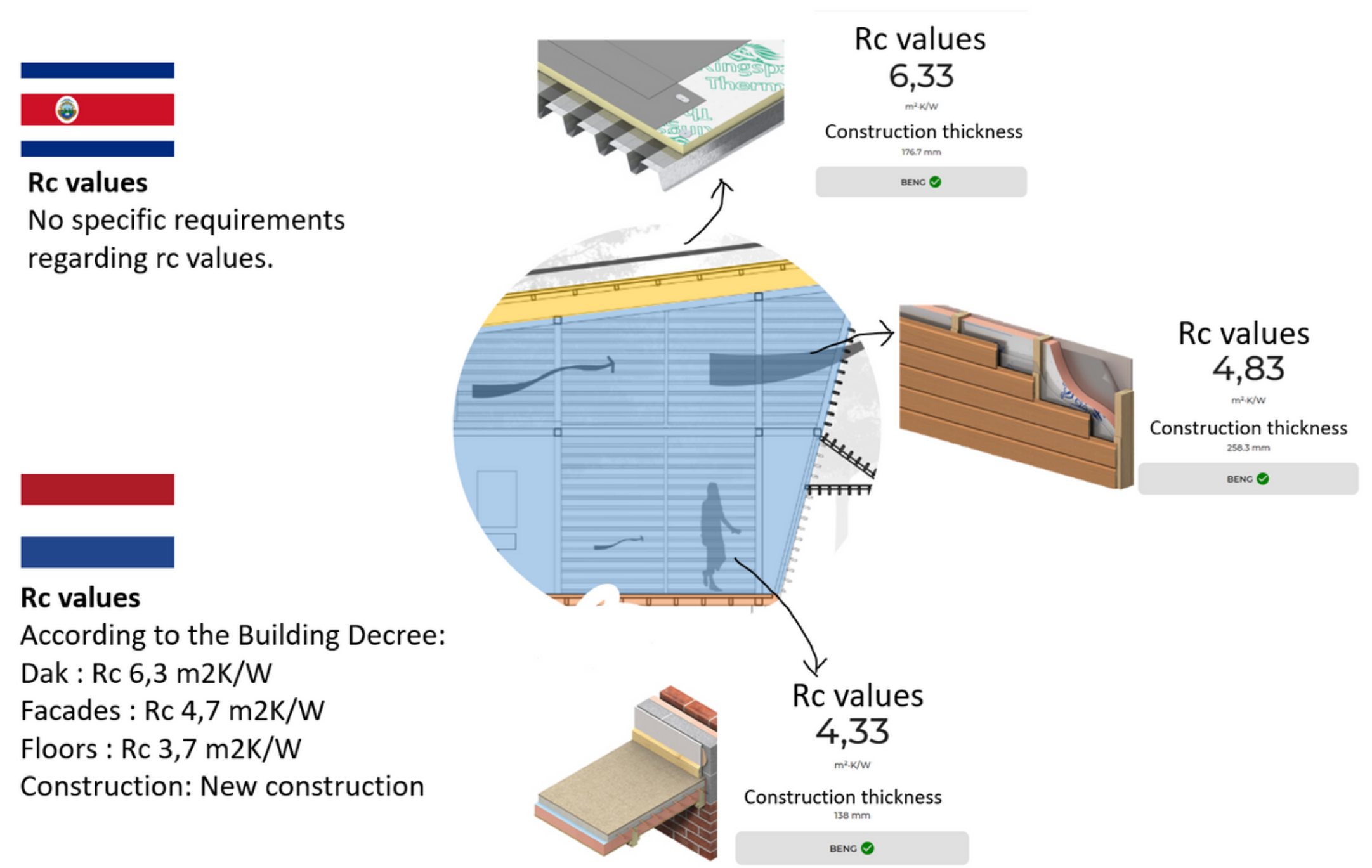
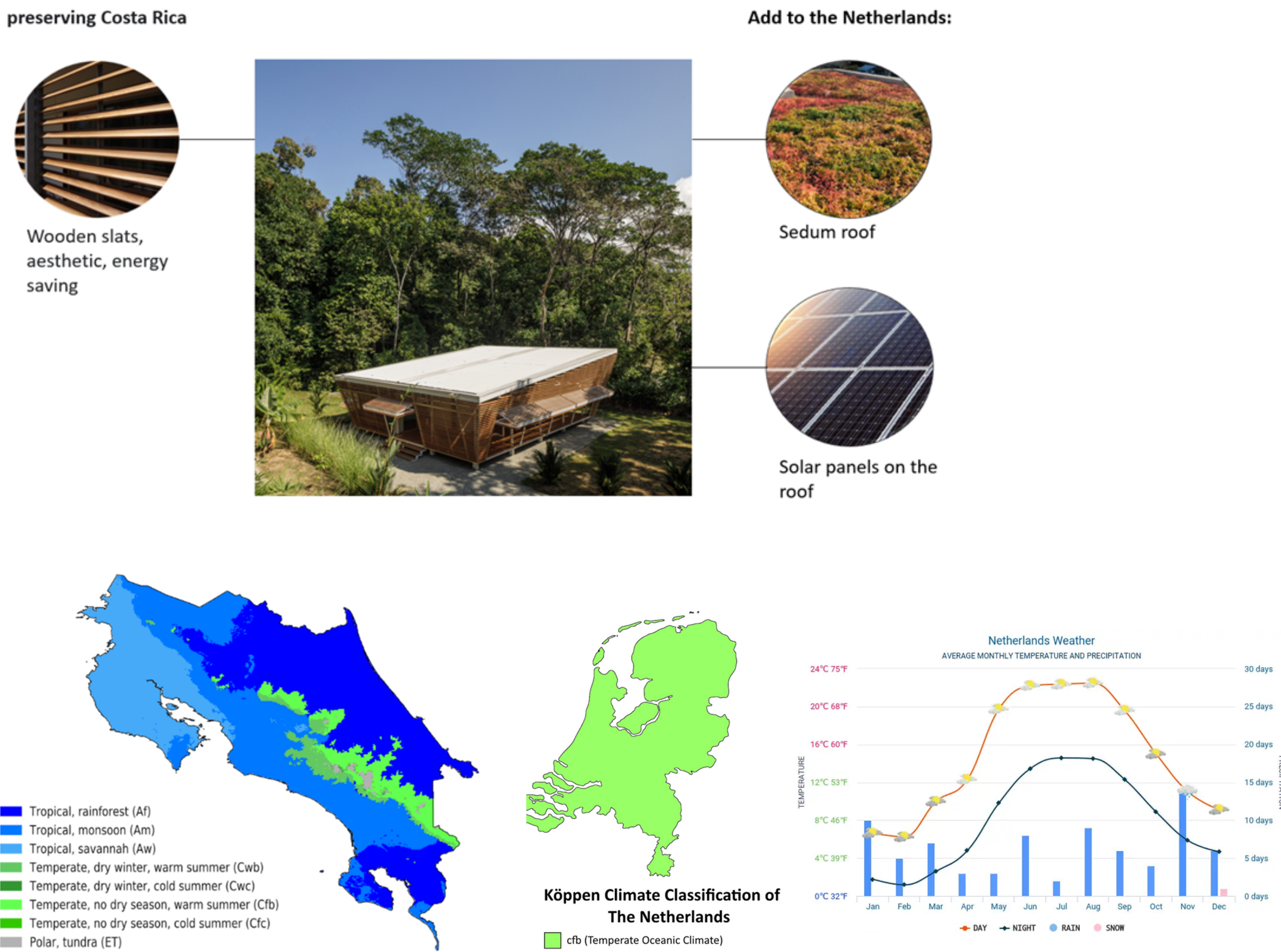


Building physics

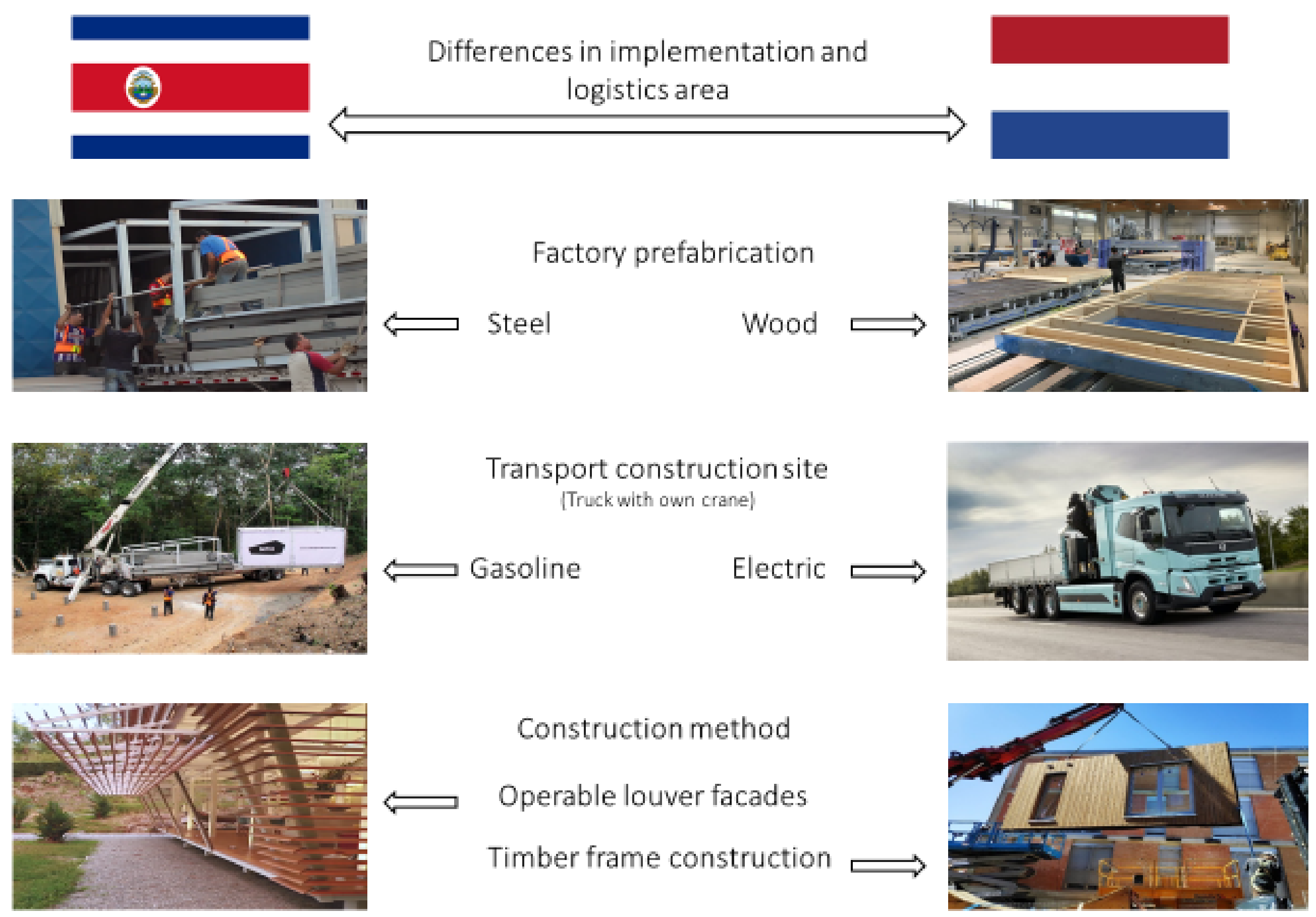


RC values research

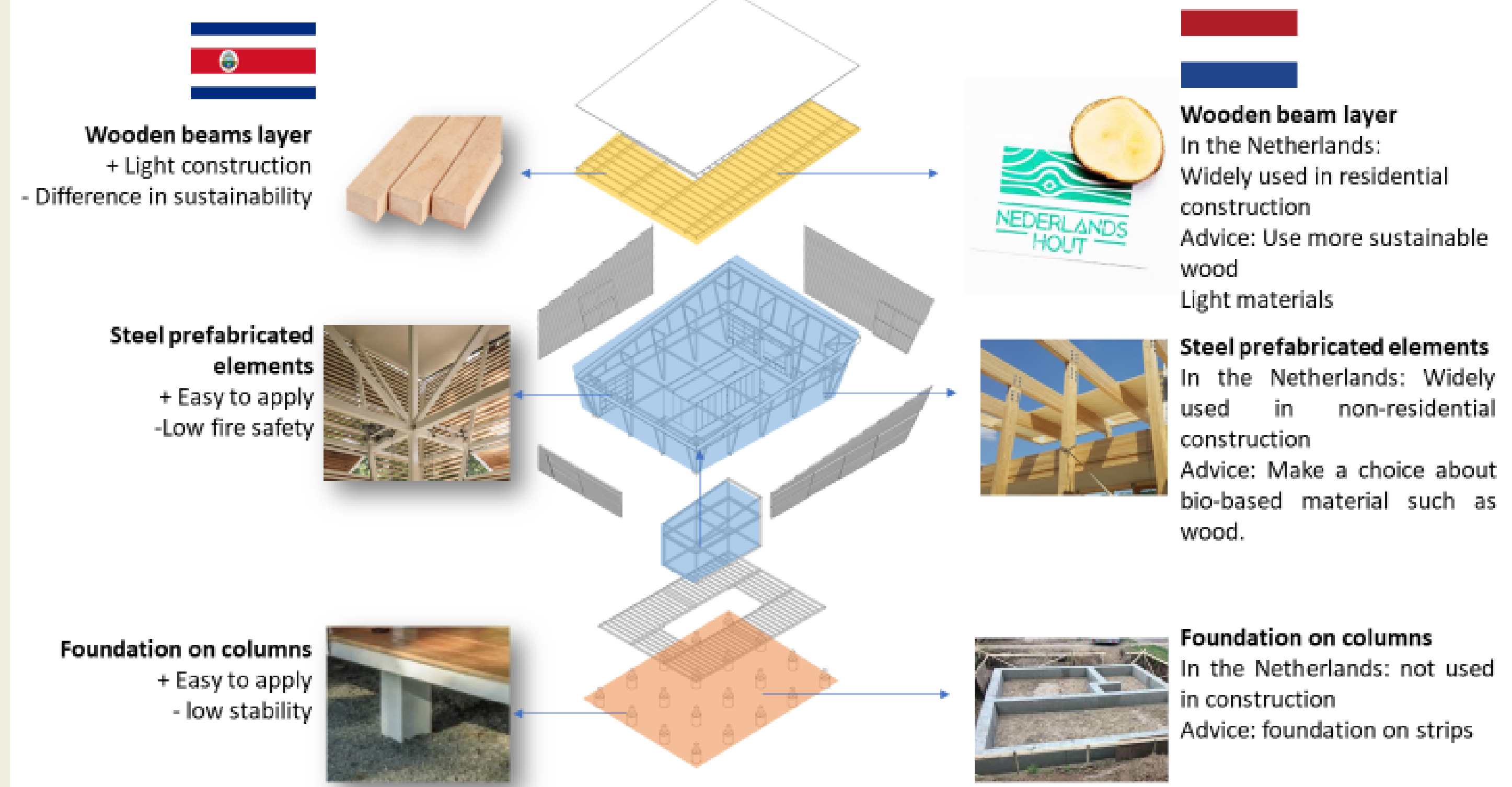
Sustainability and climate



Logistics and implementation



Construction

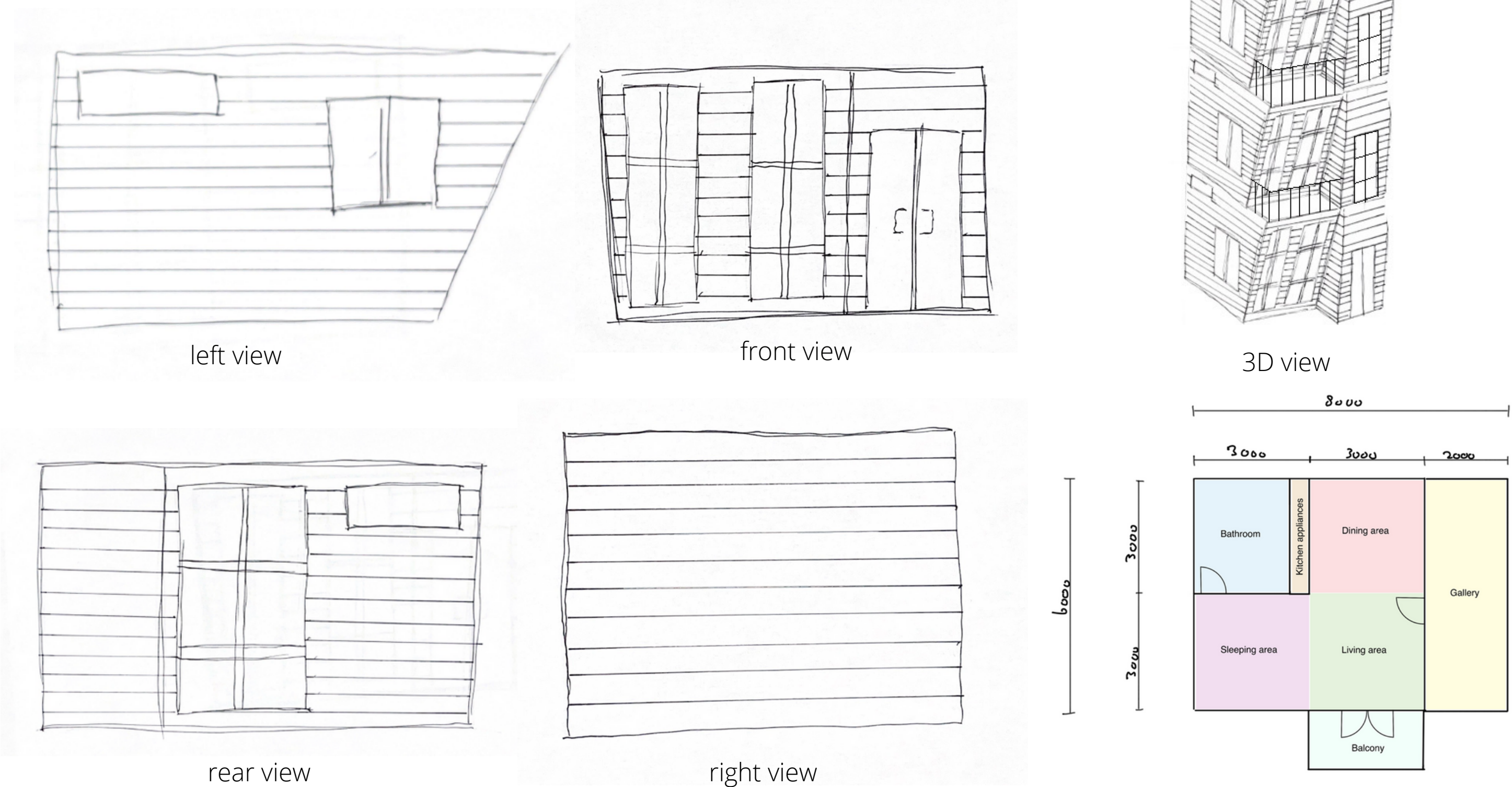


PHASE 2

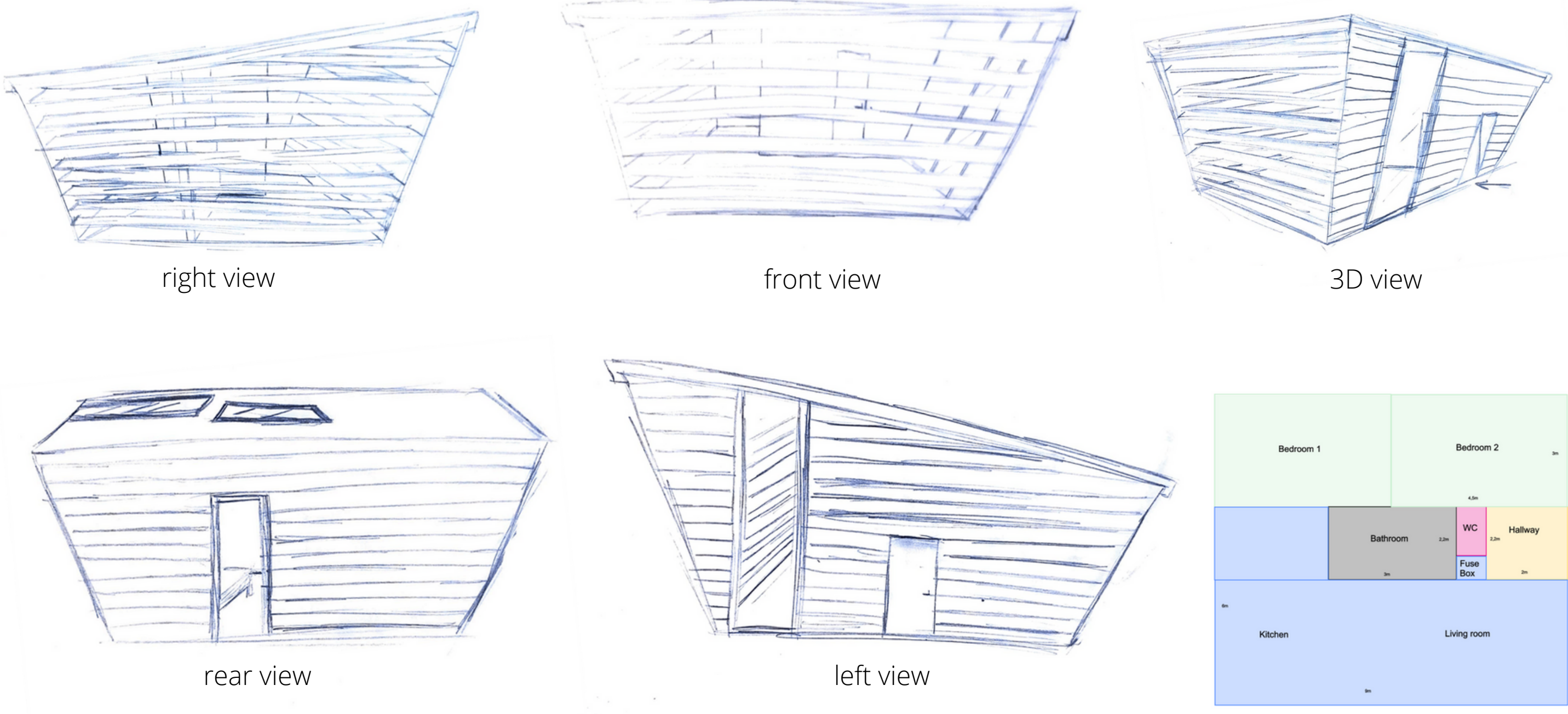
STUDIO

HOLIDAY ACCOMODATION

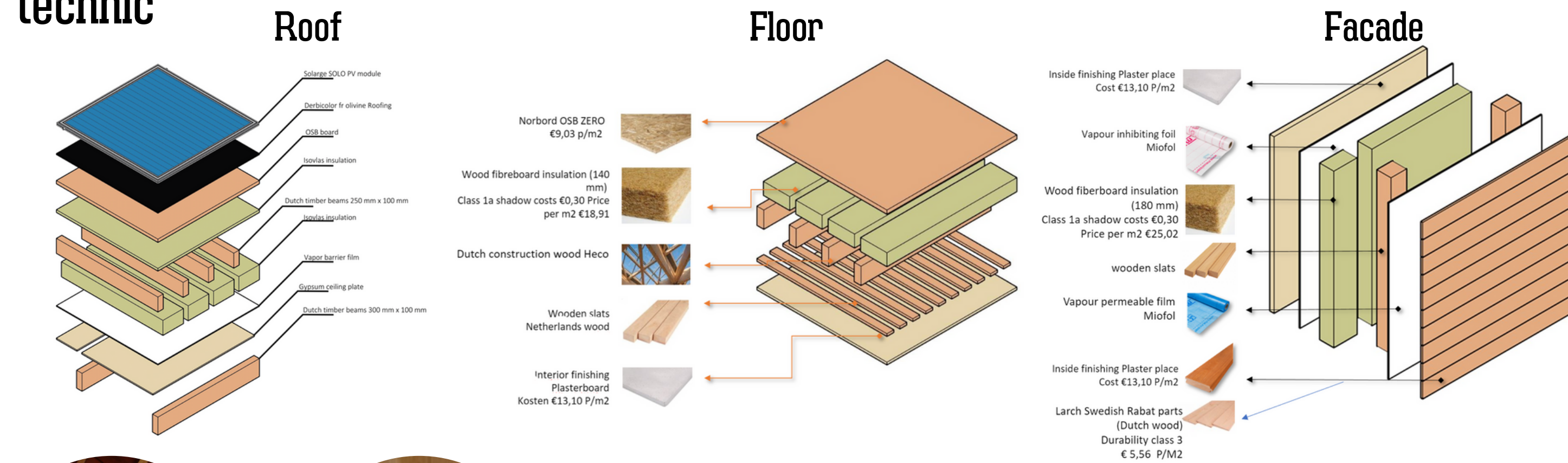
design



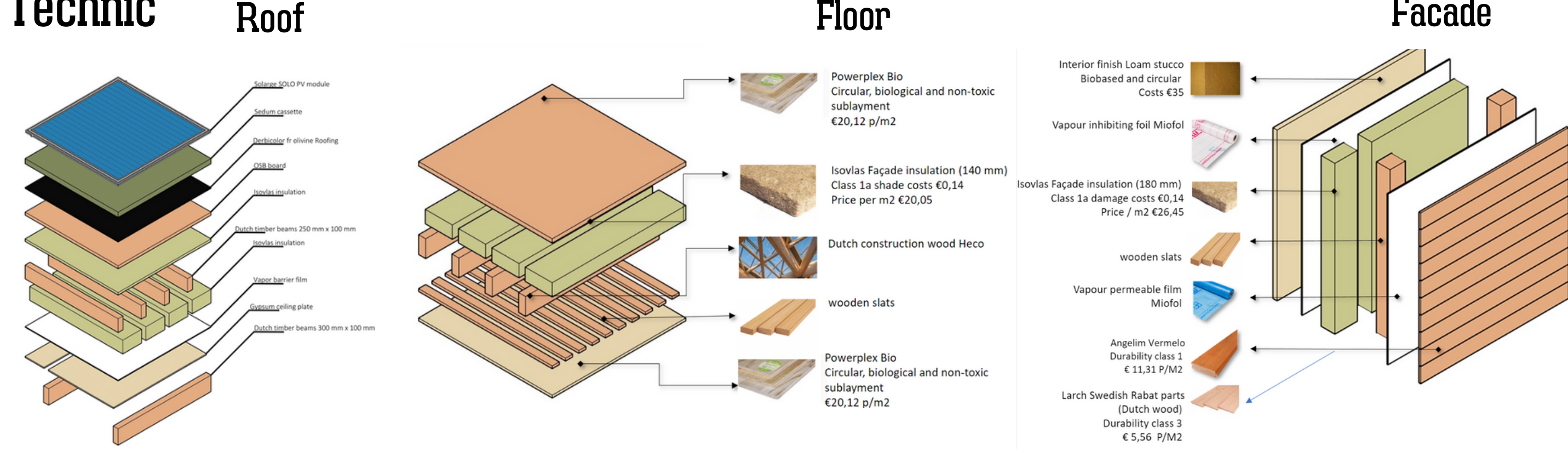
design



technic



Technic

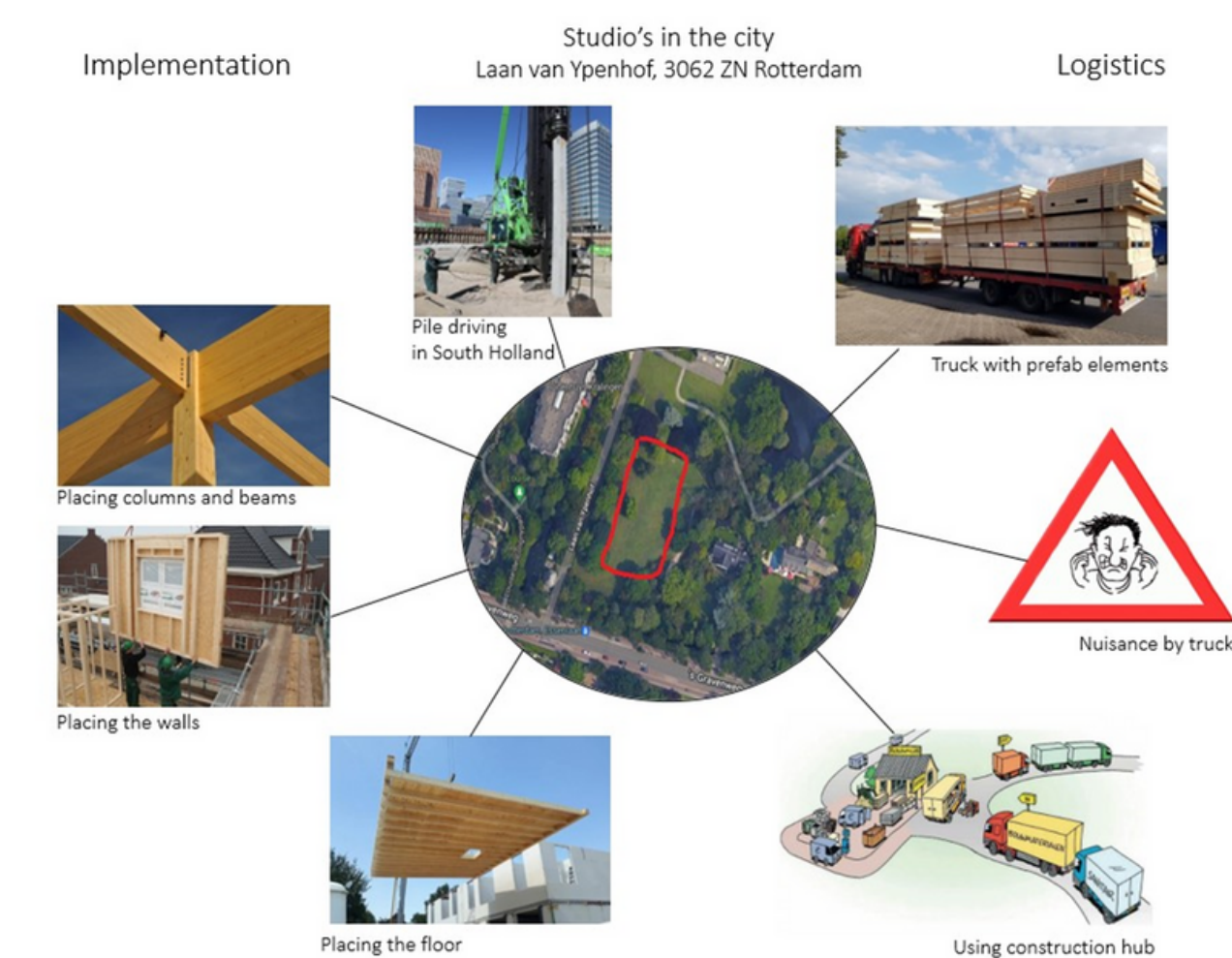


Construction



Sound absorbing material

logistics and implementation

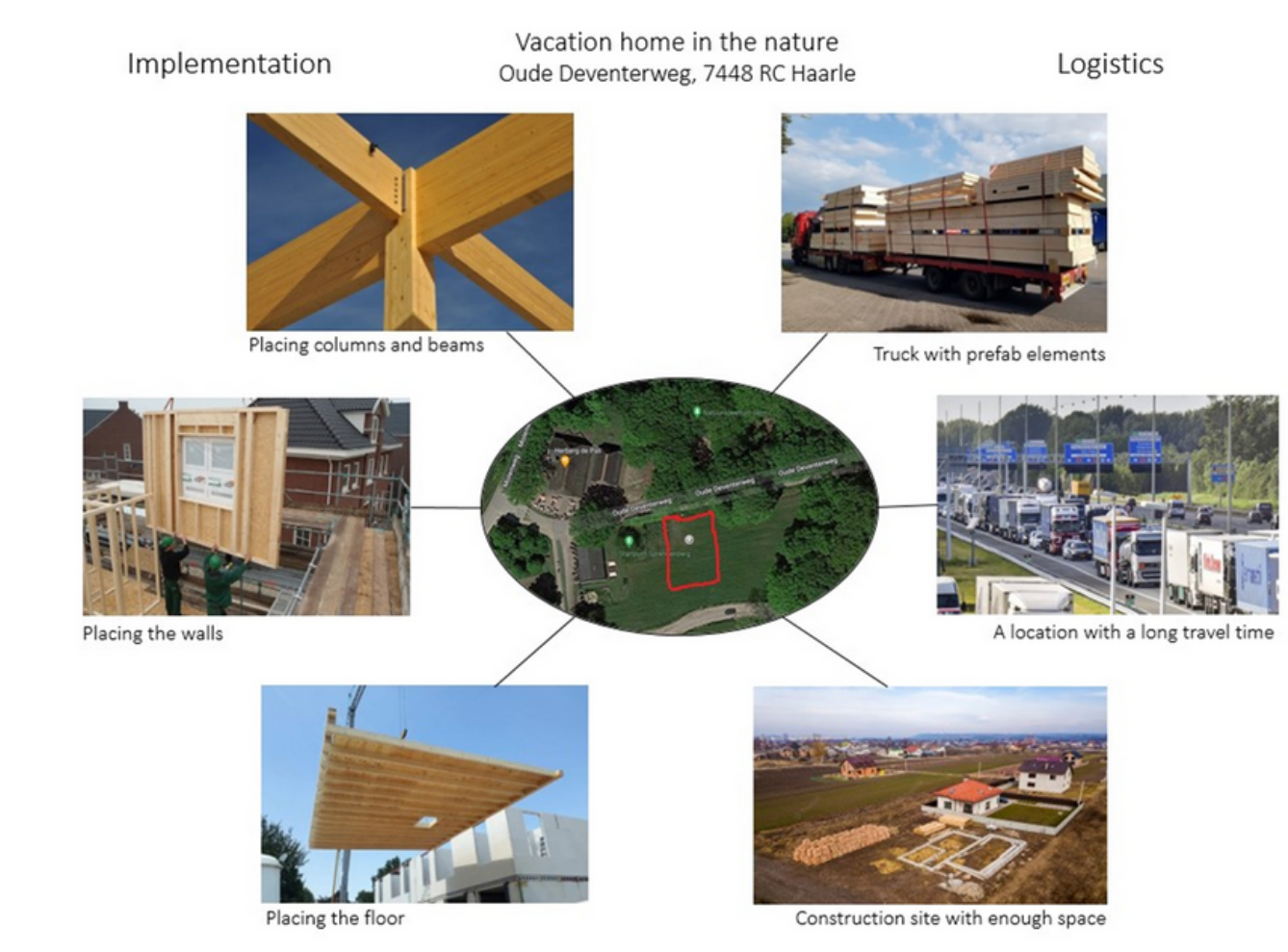


Construction

Roof waterproofing membrane DERBICOLOR® FR OLIVINE



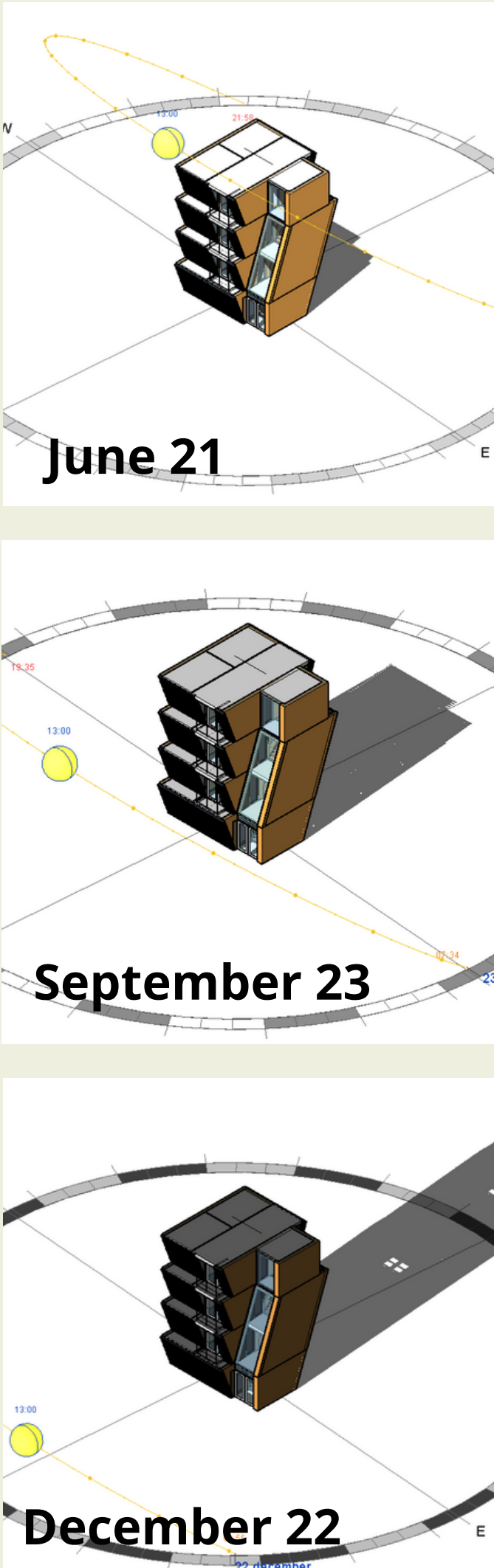
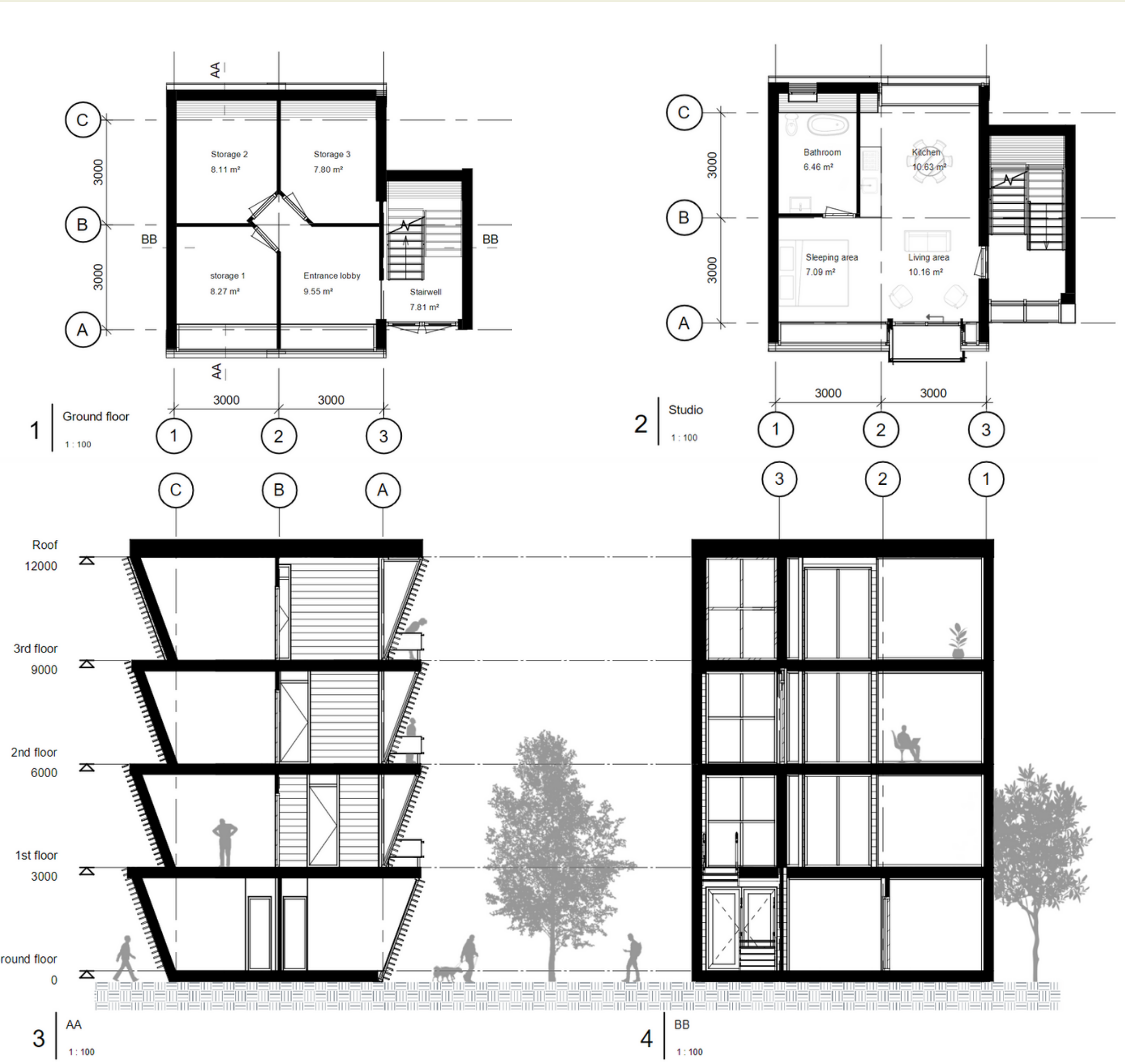
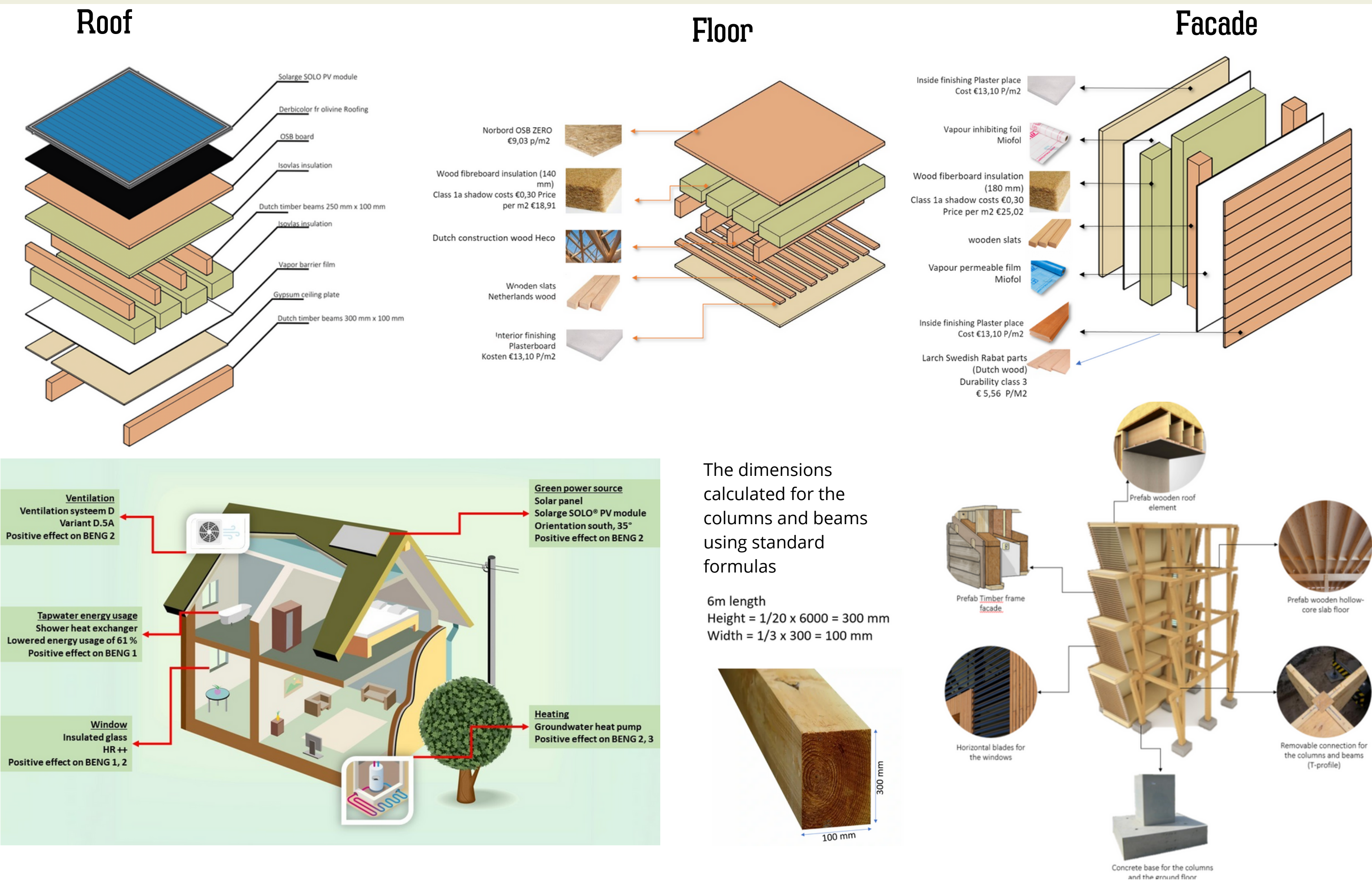
logistics and implementation



PHASE 3 Studios Sin Huella



In the past three weeks, project group 11 has been busy with researching and designing no footprint and sustainable housing based on the No Footprint House that was built in Costa Rica. The definitive design had to be adjusted to Dutch standards. The urban studio's are based on the concept of the smallest No Footprint House of 36m2. The materials of the studio's are similar to the materials used for the NFH variants and mainly consist of locally produced, Dutch wood and curtain walls. The wooden louvres are also implemented in the new design. The apartments are meant for students/starters who prefer to live alone. The studio's consist of a main, open area which is divided between a sleeping area, a living area and a dining area. The bathroom is quite small, but just the right size for a toilet and a bath/shower.



- 4 E's
- Equity** – Our greatest concern is the housing shortage, which is why we have opted for stackable studios. The studios can even be added later to create more studios.
 - Economy** – The materials are chosen on the basis of cost, so that it remains affordable for the buyer. The materials chosen are the most sustainable materials based on the shadow costs.
 - Engineering** – The applied construction method is easily applicable in the environment due to the prefab elements. The building is also assembled so that it can be used for other purposes later on.
 - Environment** – The studios are designed for starters and students, making the chosen location an ideal place for this target group. The location is close to the center and public transport, which is also a plus for this target group.

