

Culture / Kültür

The programs implemented by Kirkayak Kültür target disadvantaged and marginalized communities such as refugees and Gypsy (Dom and Abdal), and facilitate equitable access to rights and services.

- Shared spaces.
- Functions through which groups come together.

History / Tarih

Kirkayak Kültür was founded to contribute to the culture of social cohesion and co-existence by creating community spaces for different social-economic classes in society, and by supporting disadvantaged, vulnerable groups and newcomers.

The Stonebuilding is a historic Antep-house. Because of this status, we suspect that a subsidy can be obtained for the Stonebuilding. Presumably an amount around 75000 TL,

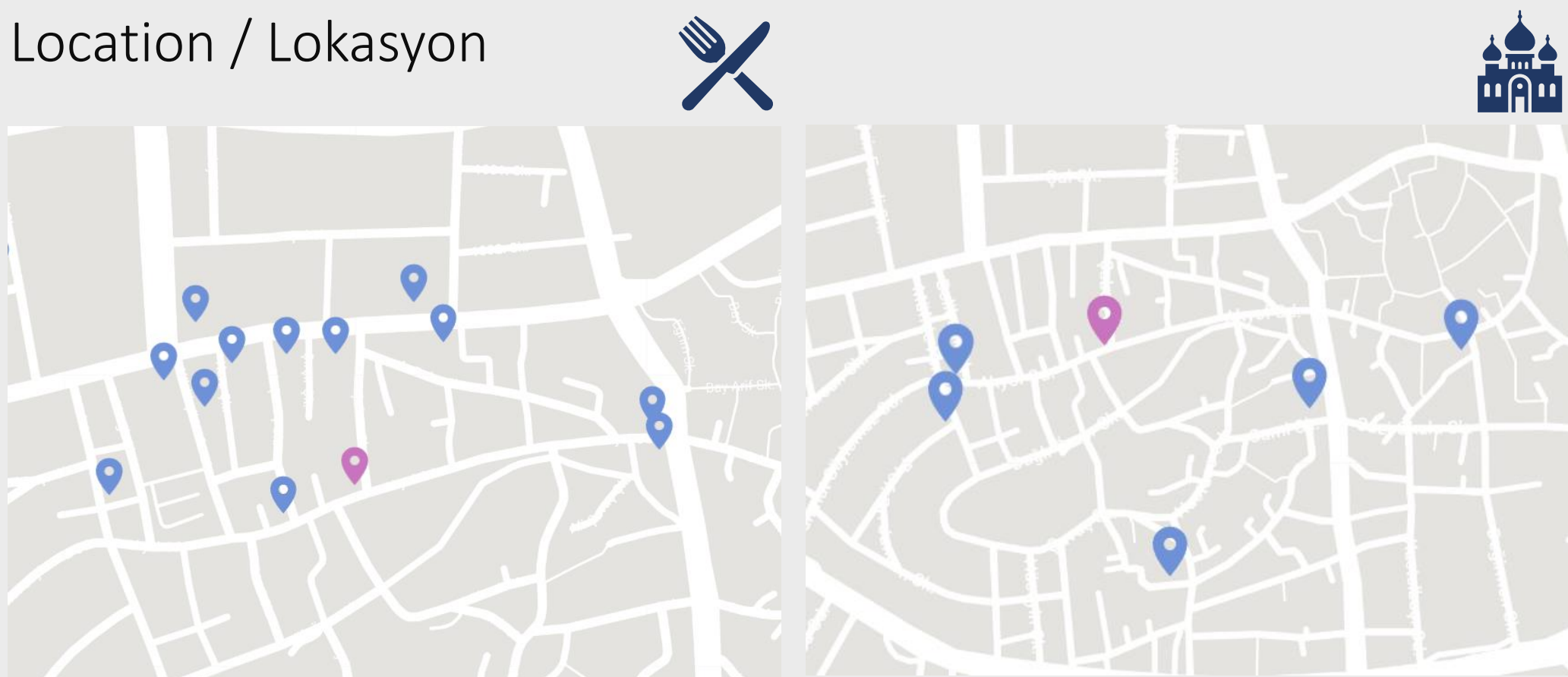
Photo analysis / Fotoğraf analizi



Financial independent / Finansal olarak bağımsız



Location / Lokasyon

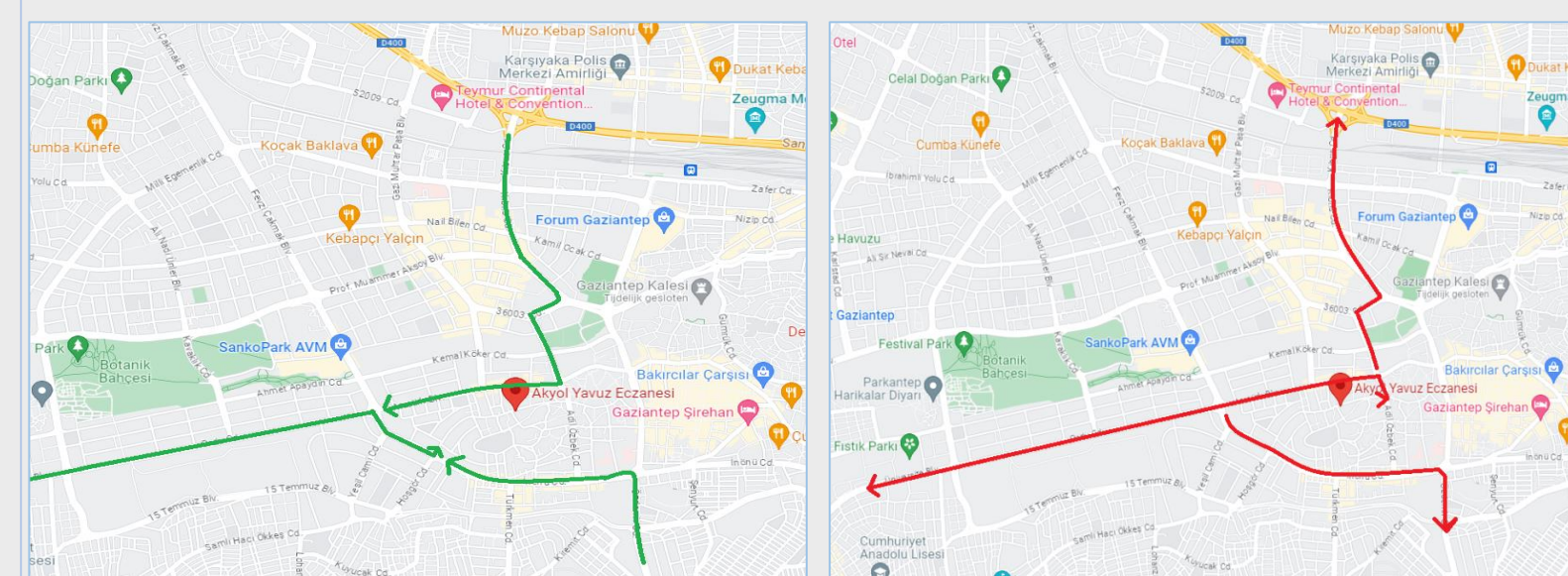


Important parties in the area:

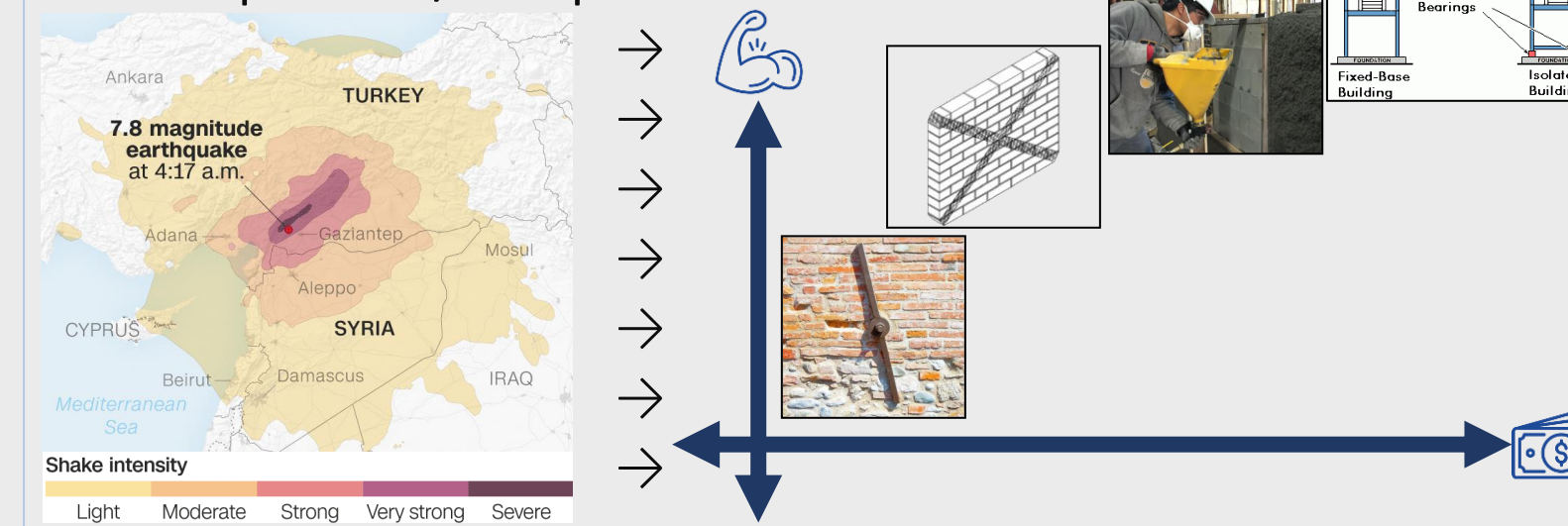
- Encircling
- Stores; appointed to important cutting holders
- Mosque: Ankyol Camii
- Prayer house: Fevzi usla taziye evi
- Mosque: Ferhadiye Camii
- Residents of the Mahmut Söylemez Cd. street.
- Shopkeepers of the Mahmut Söylemez Cd. street.

- Power** ↑
- Local authority Gaziantep
 - Resident within a radius of 50m
 - Prayer house: Fevzi usla taziye evi
 - Mosque: Ferhadiye Camii
 - Pastry chef: Yıldız çubuk kahke fırını
 - Health food store: ZAHİRE EVİ GAZİANTEP BÜYÜKŞEHİR BELEDİYESİ
 - Paint store: Salmon Boya
 - Handyman: Gölge Sihhi Tesisat
 - Drugstore: Sudecan Eczanesi
 - Home store: Yıldız CAM
- Intrest** →
- Other stores in the Akyol Cd. street.
 - School: Ankyol Secondary School.
 - School: Naime Durdu Dogmus Anaokulu
 - School: 100. Yil Ilkokulu

Routes to location / konuma giden yollar



Earthquakes/ Depremler

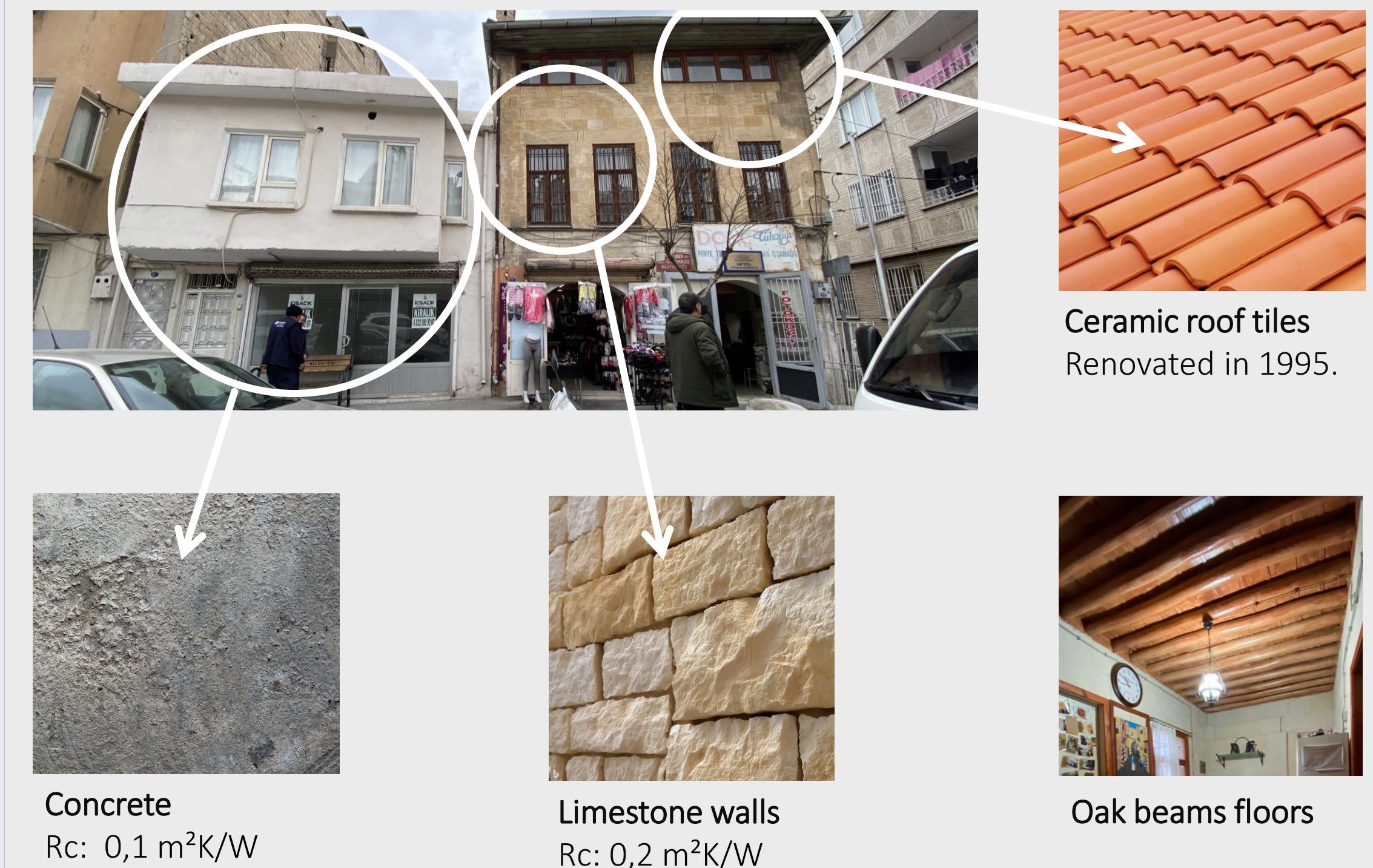


Turkish Building Code / Türkiye İnşaat Yönetmeliği

The following sources for requirements for new-build homes can be used as a guideline for this renovation project:

- Construction (Article 1 and Article 2)
- Energy Performance (Chapter Four, Article 9)
- Installation Insulation (Article 11)
- Ventilation (Article 14)

Materials and appearance / Malzemeler ve görünüm



The building, constructed in 1853, is a traditional stone house typically used for residential purposes. Its foundation is made of sandstone, providing continuous support to the load-bearing walls. Thanks to the mass of the building materials and cross ventilation, the house maintains a cool temperature throughout the year. Additional ventilation or air conditioning is rarely necessary, and if needed, we prefer to adapt and live without relying on mechanical cooling.

Scenarios / senaryolar

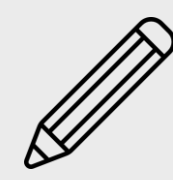
Design concept / tasarım konsepti:

Schedule of requirements:

- Functions; hairdresser, office, kitchen shop, common room (multifunctional for workshops)
- Aim to preserve original architecture
- Building serves as a meeting place for different socio-economic classes in society
- Kitchen should be at least 20 m2.
- The building should have at least 3 common areas
- Both buildings should have their own sanitary facilities.

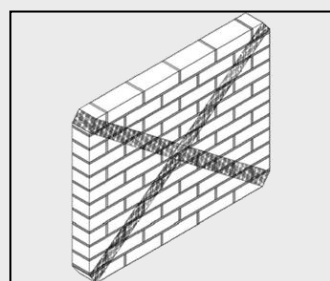
Functions:

Mental health - Social gathering - Relaxation - Income

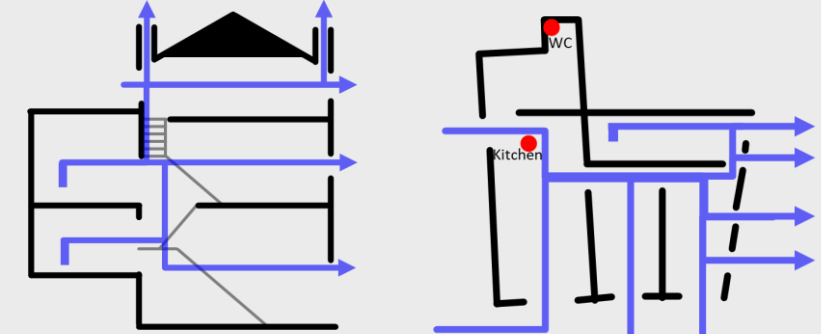


Engineer concept / Mühendis Konsepti:

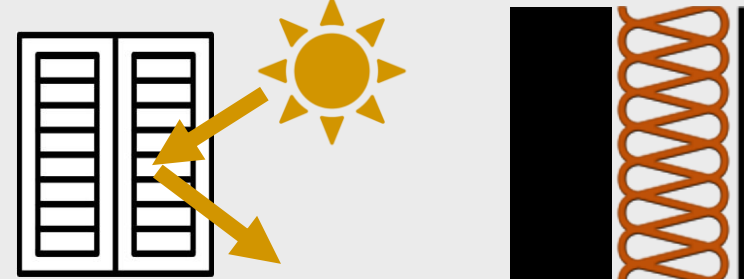
Earthquake resilient:



Ventilation:

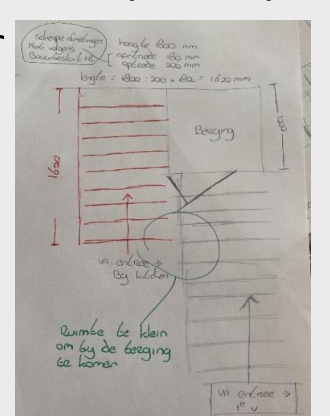
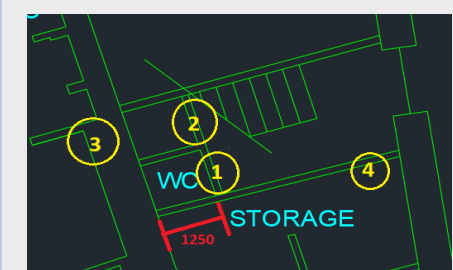


Thermal comfort:

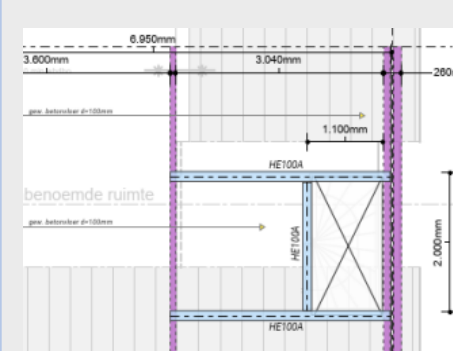


Execution concept / yürütme Konsepti:

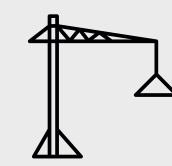
- Determine stair position



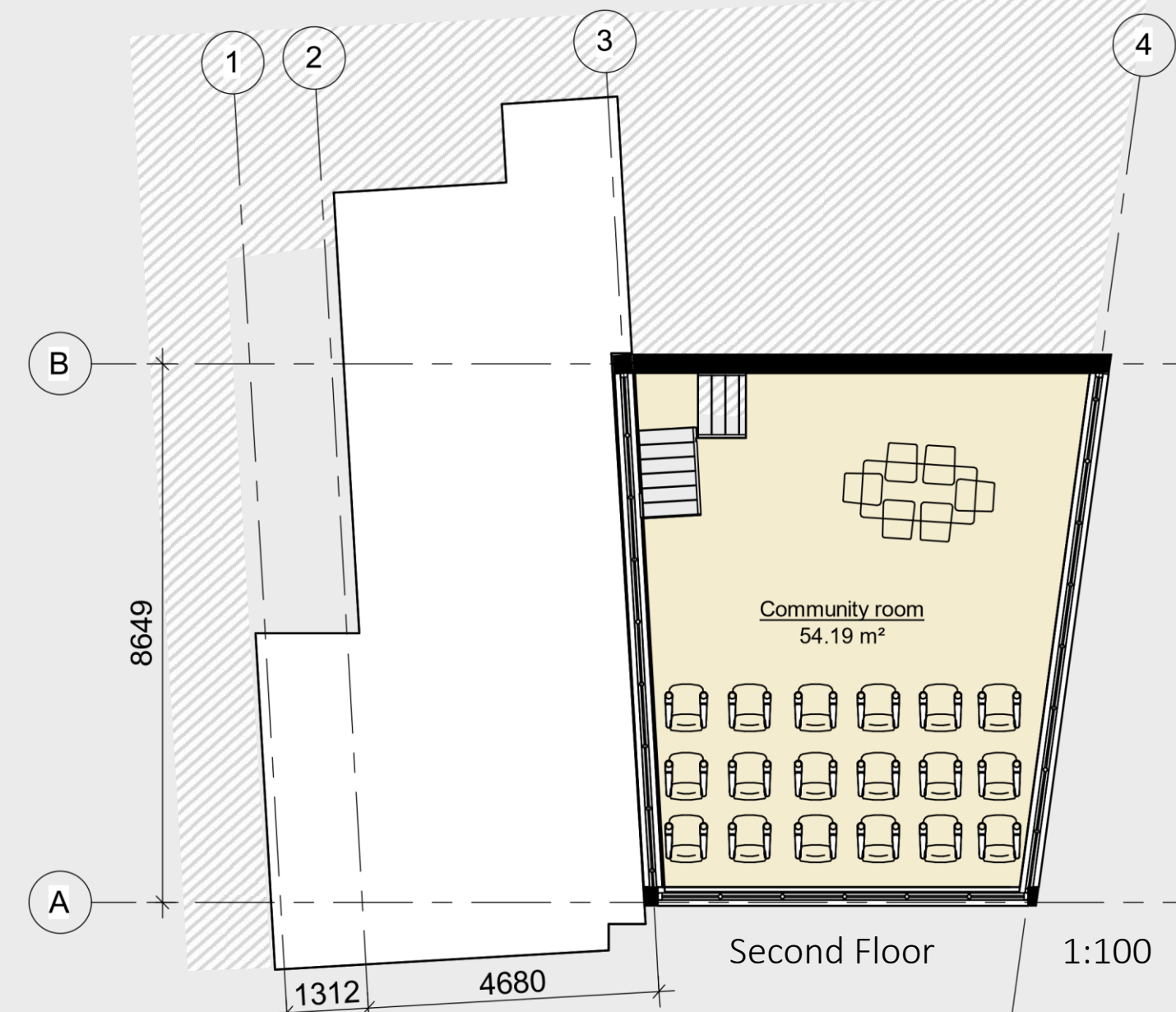
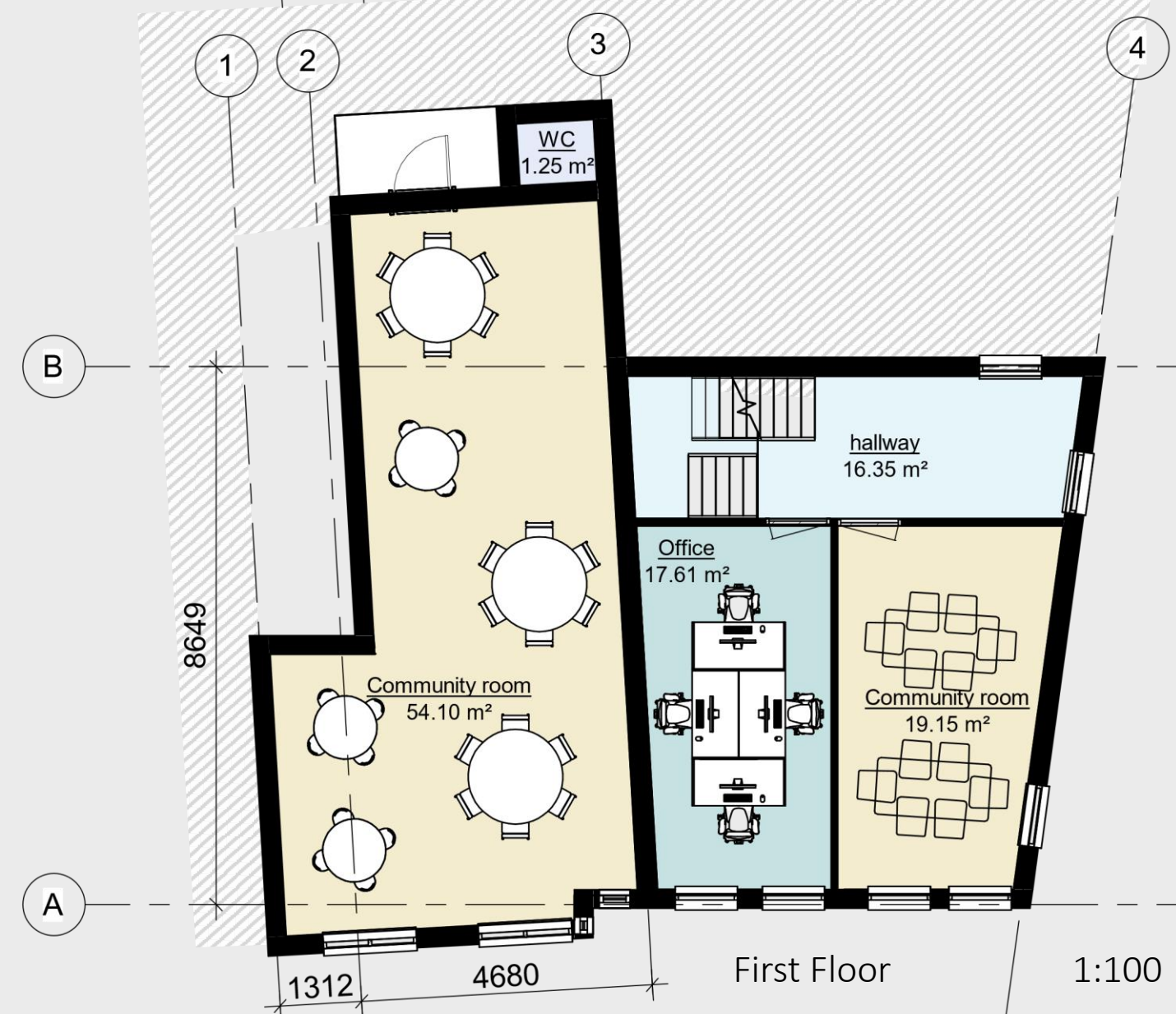
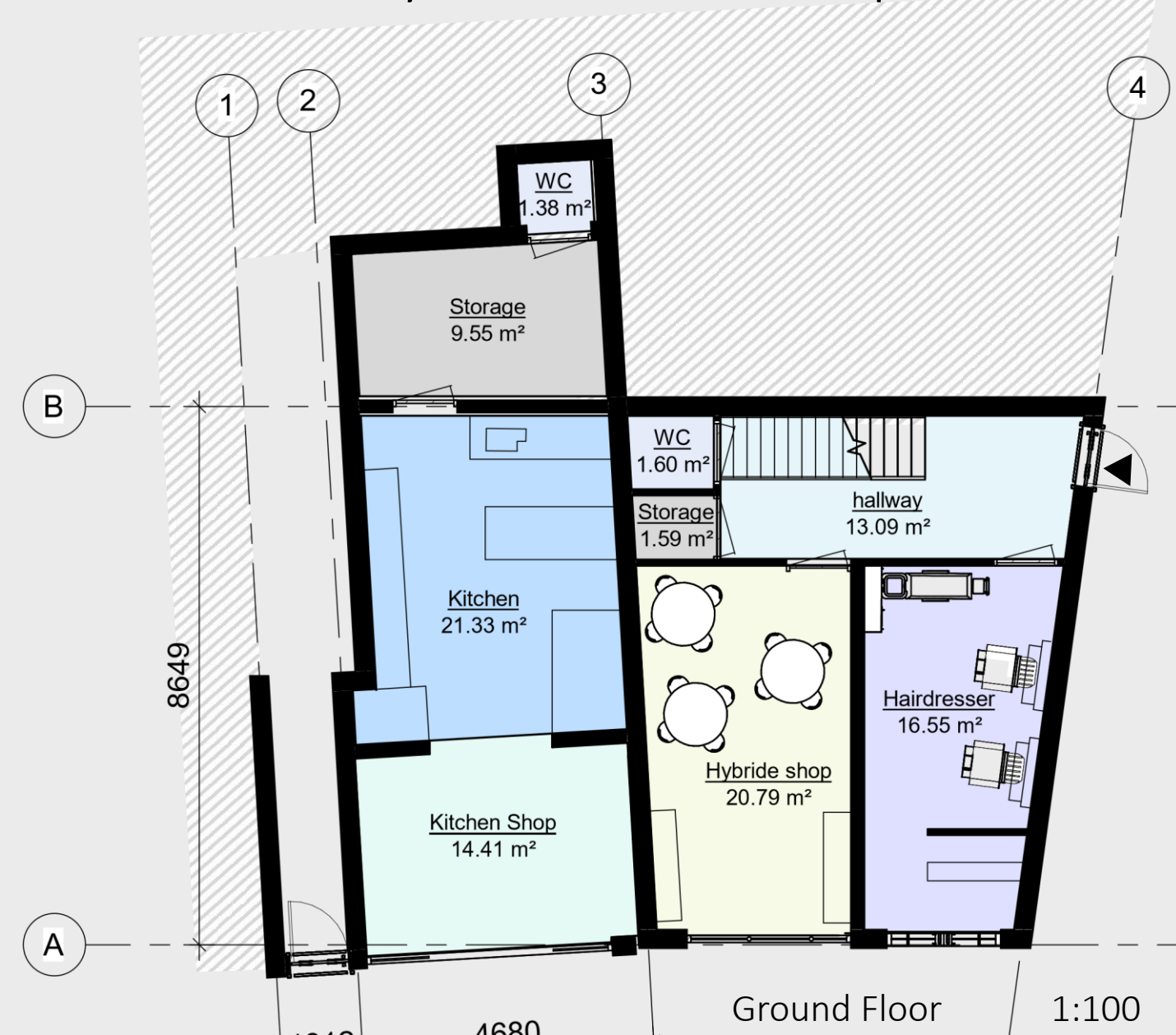
- Opportunities to capture savings



- Water and sewage connection kitchen.
- Insulation options
- Restore kitchen floor
- Possibilities for the realization of new walls.



Scenario / senaryo 1: Public concept



Room legend / Oda efsanesi

	Hallway		WC
	Storage		Hairdresser
	Hybride shop		Kitchen shop
	Kitchen		Community room
	Office		

Scenario 1



Scenario 2



Differences

- Breakthrough building
- Open/ closed facades
-

Similarities

- Functions
- Preserved original architecture
- Meeting place for different socio-economic classes in society

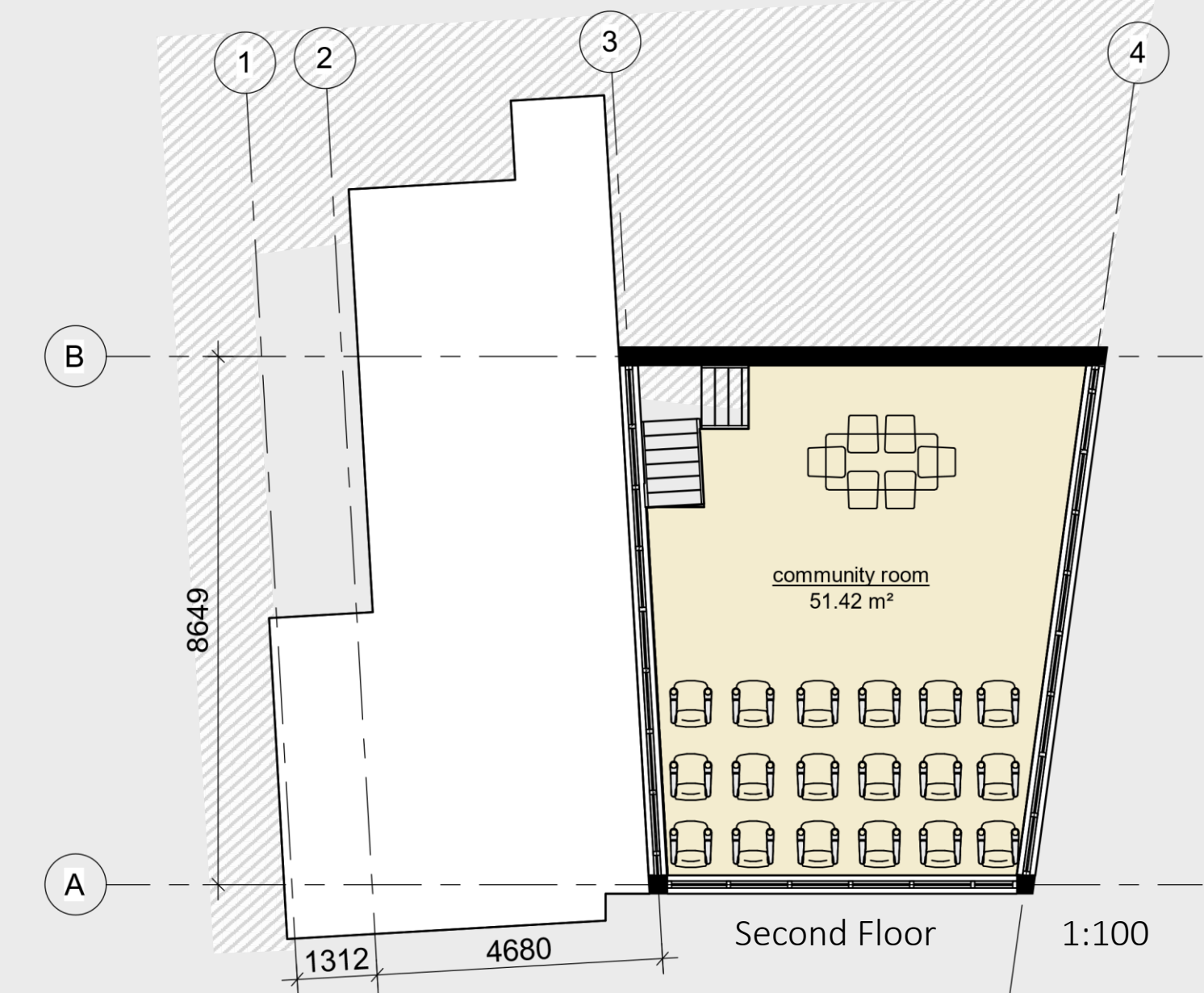
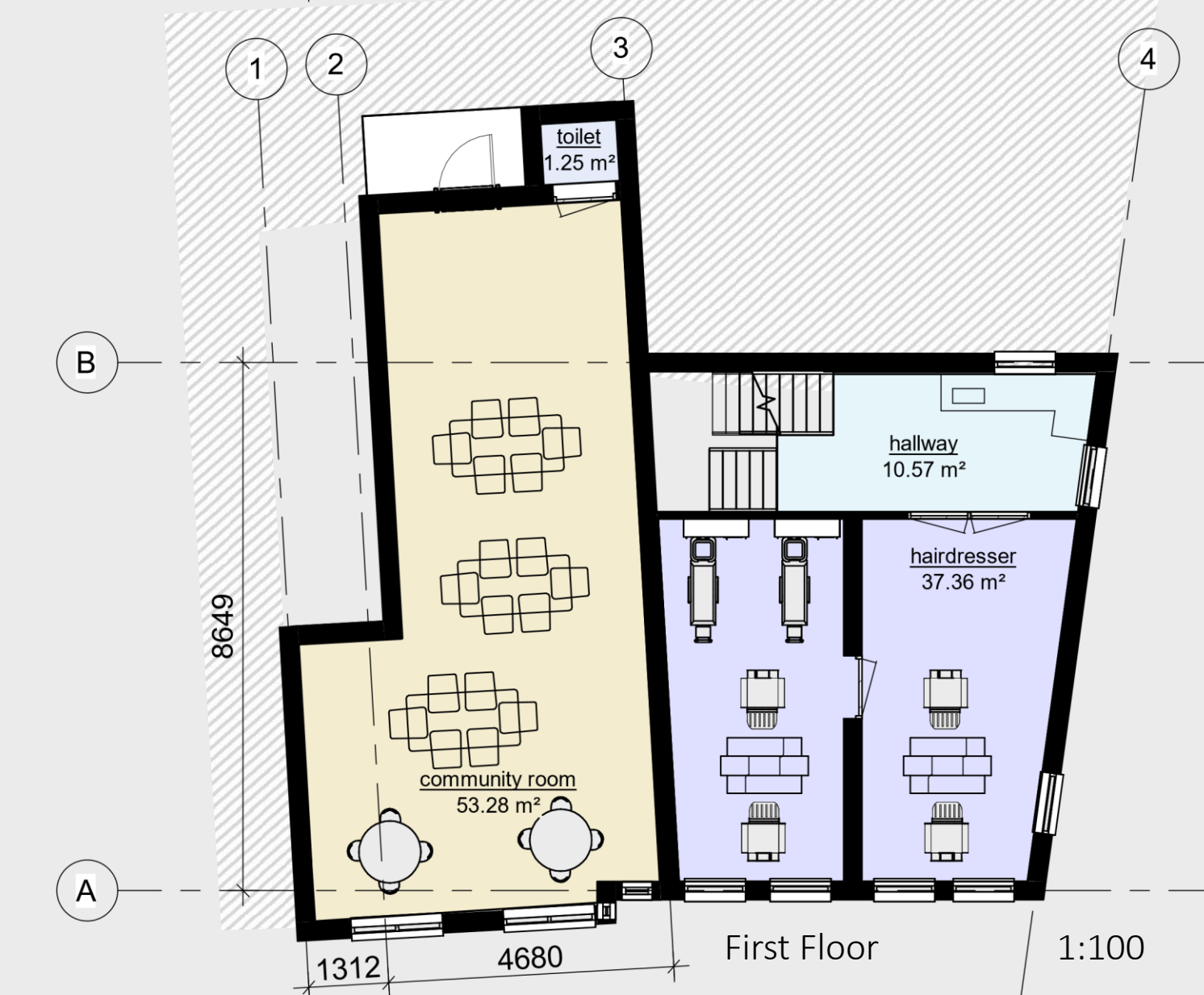
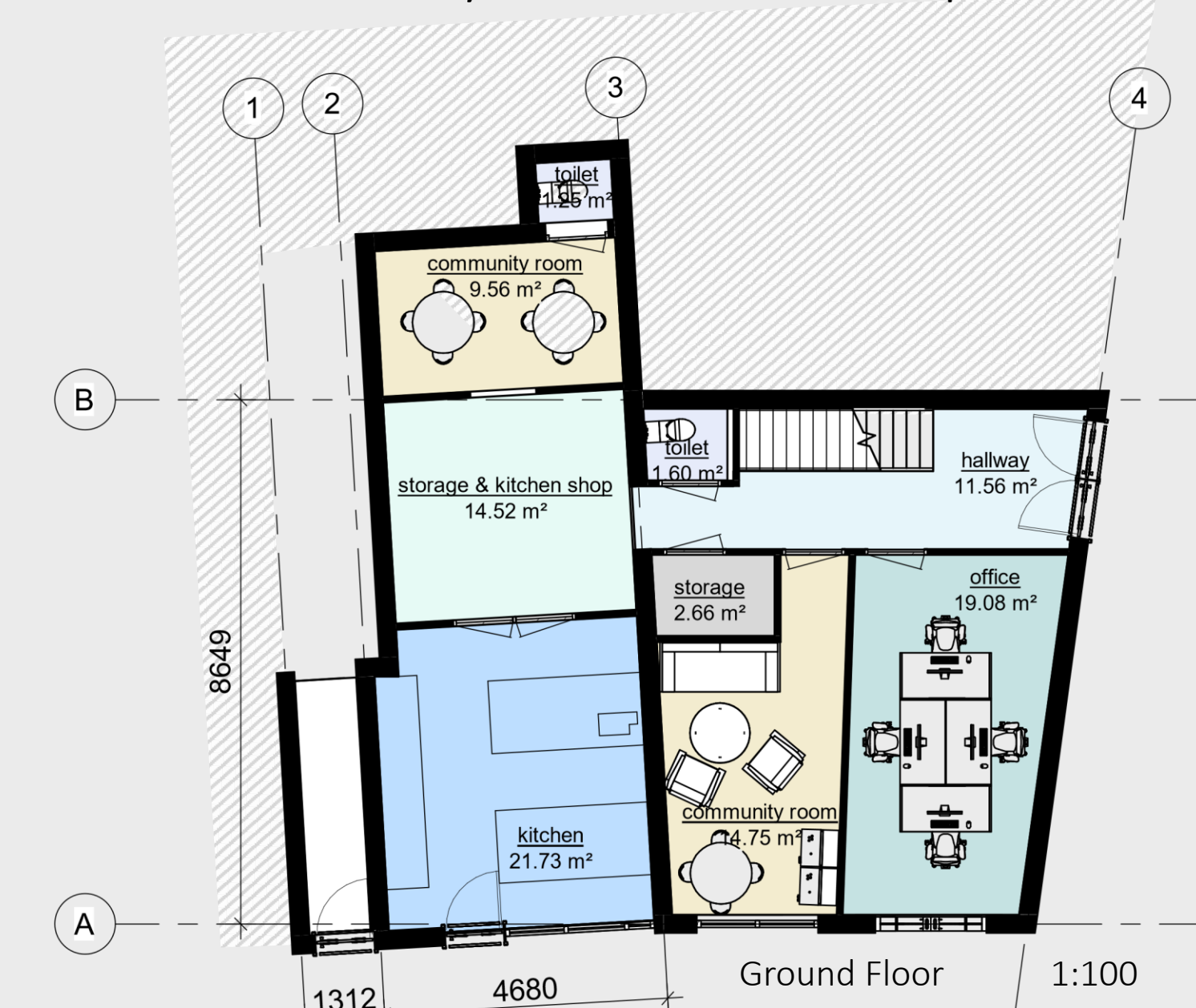
Conclusion / çözüm:

The choice was made to merge the two scenario's with each other, as both have different advantages. We take the layout of scenario 1, because it is easier to use, making the community centre more functional.

We chose the breakthrough of scenario 2, so that the two buildings are more easily accessible between each other. For the facade layout, we made a combination of both scenario's. We choose scenario 1 for the Kitchenbuilding, and scenario 2 for the Stonehouse so that the traditional architecture is preserved.

The height differences on the ground floor are not yet included in the two scenario's, and will therefore be adjusted in the final design.

Scenario 2 / senaryo 2: Private concept



Final concept / Son konsep



Achievable. Low budget. Simple interventions. Create a connection between people and the building by involving them in the renovation.

