

Target Audience



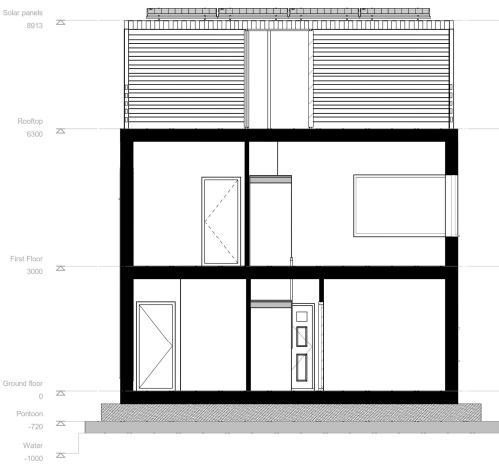
Location



NO FOOTPRINT HOUSES BY THE A1-VISION  
*Floating Houses Merwe-Vierhaven (M4H)*



Cross section  
AA



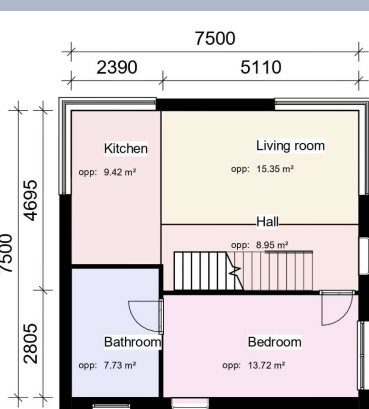
Ground floor



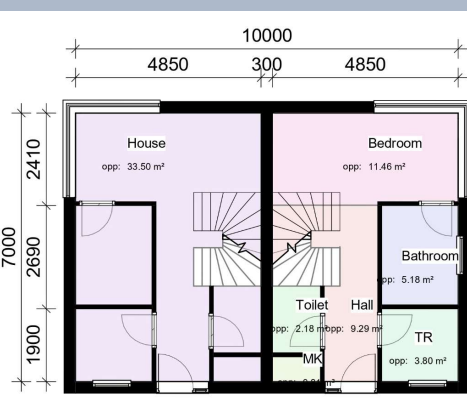
Single-family house

AA

First floor

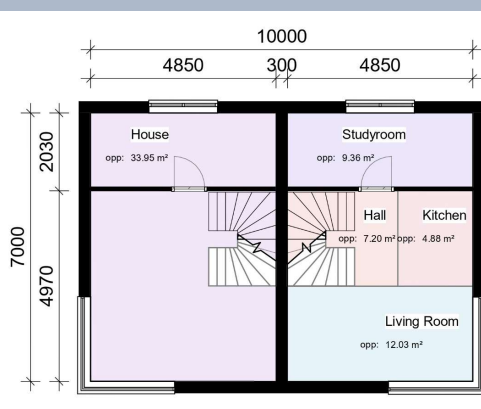


Ground floor

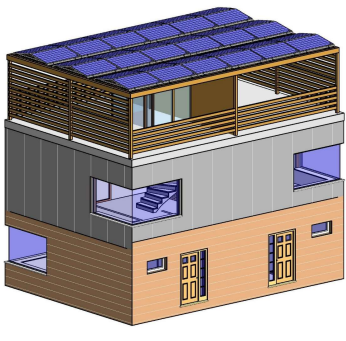


Starter home

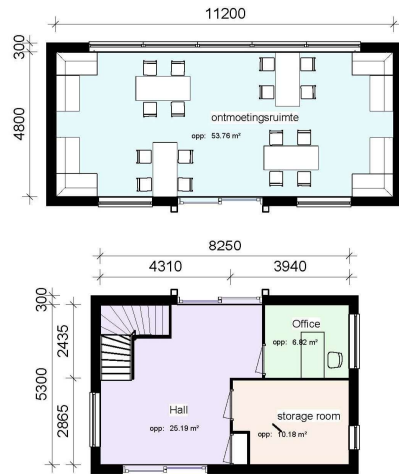
First floor



3D



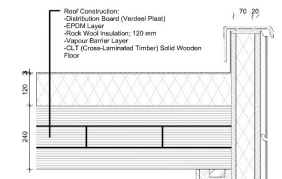
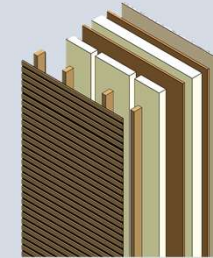
## Ground floor



## First floor



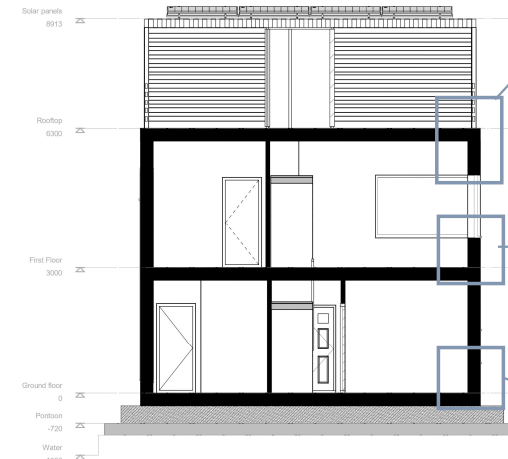
## Exploded view wall



Wall package 1st floor:

- 800 Basen bouwen platen
- Wooden rules
- Impermeable waterproof foil
- isolation plate 1.75 Wink
- CLT
- Blokm: 2.73 Wink
- double plasterboard

## Detail drawings



Wall package 1st floor:

- 800 Basen bouwen platen
- Wooden rules
- Impermeable waterproof foil
- isolation plate 1.75 Wink
- CLT
- Blokm: 2.73 Wink
- double plasterboard

CLT massive floor

Floor package BG:

- Laminated wooden beams
- Half floor
- isolation 1.37 Wink
- CLT construction floor

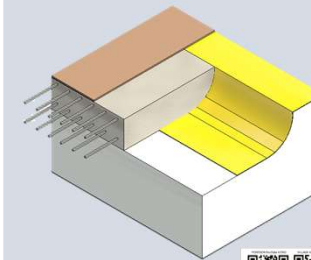
Wall package Ground Floor:

- Horizontal wooden cladding boards 20 mm
- Wooden rules
- Impermeable waterproof foil
- isolation plate 1.75 Wink
- CLT
- Blokm: 2.73 Wink
- double plasterboard

Footing Opbouw:

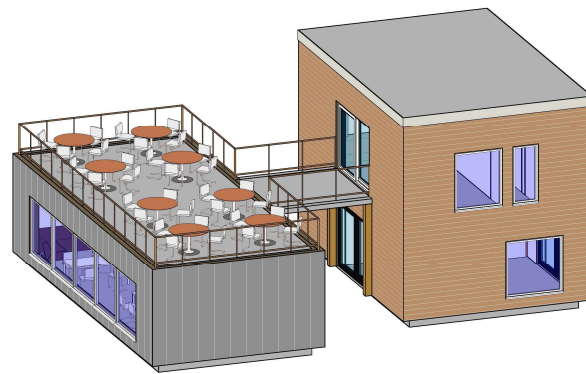
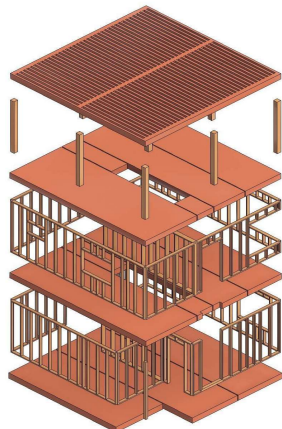
- Steel reinforcement 400 mm
- Concrete 400 mm
- Foundation: 400 x 425 mm

## 3D view Pontoon



# The HUB

## 3D construction model



## 3D HUB

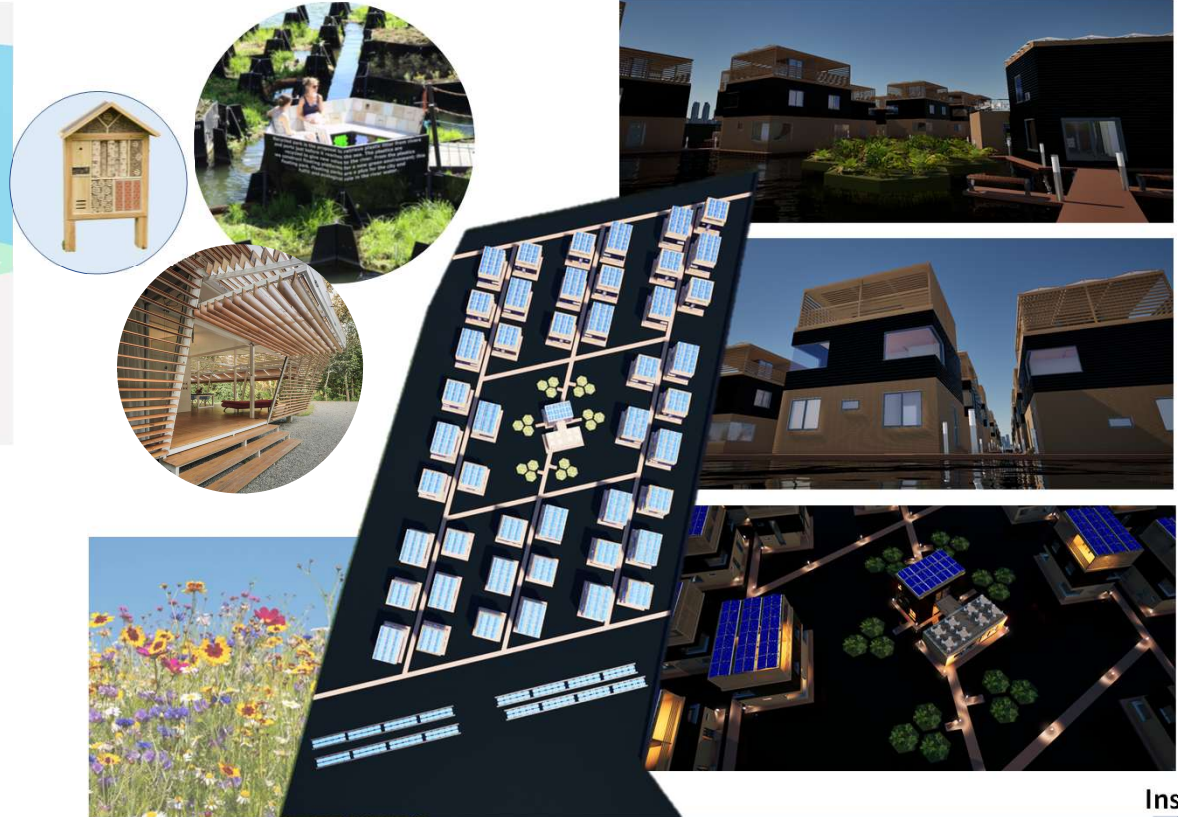


## The logistic plan

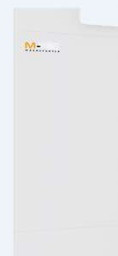


### Logistic plan

- Prefab HSB-elements produced at RDM
- Transport to M4H by water
- **Why Water Transport?**
  - 37% CO<sub>2</sub> reduction
  - Zero city disruption
- **Technical Setup**
  - Barge + electric push tug
  - 4 homes per trip
- **Loading & Unloading**
  - Telescopic cranes (RDM & M4H)
  - No intermediate storage
  - Direct placement on floating base
- **Planning & Phasing**
  - Just-in-time delivery
  - 1 house = 1 day assembly



## Installations



Water-water heatpump



Solar panels



HRV-Unit balanced ventilation

PONTOON YouTube VIDEO



VILLAGE YouTube VIDEO

